

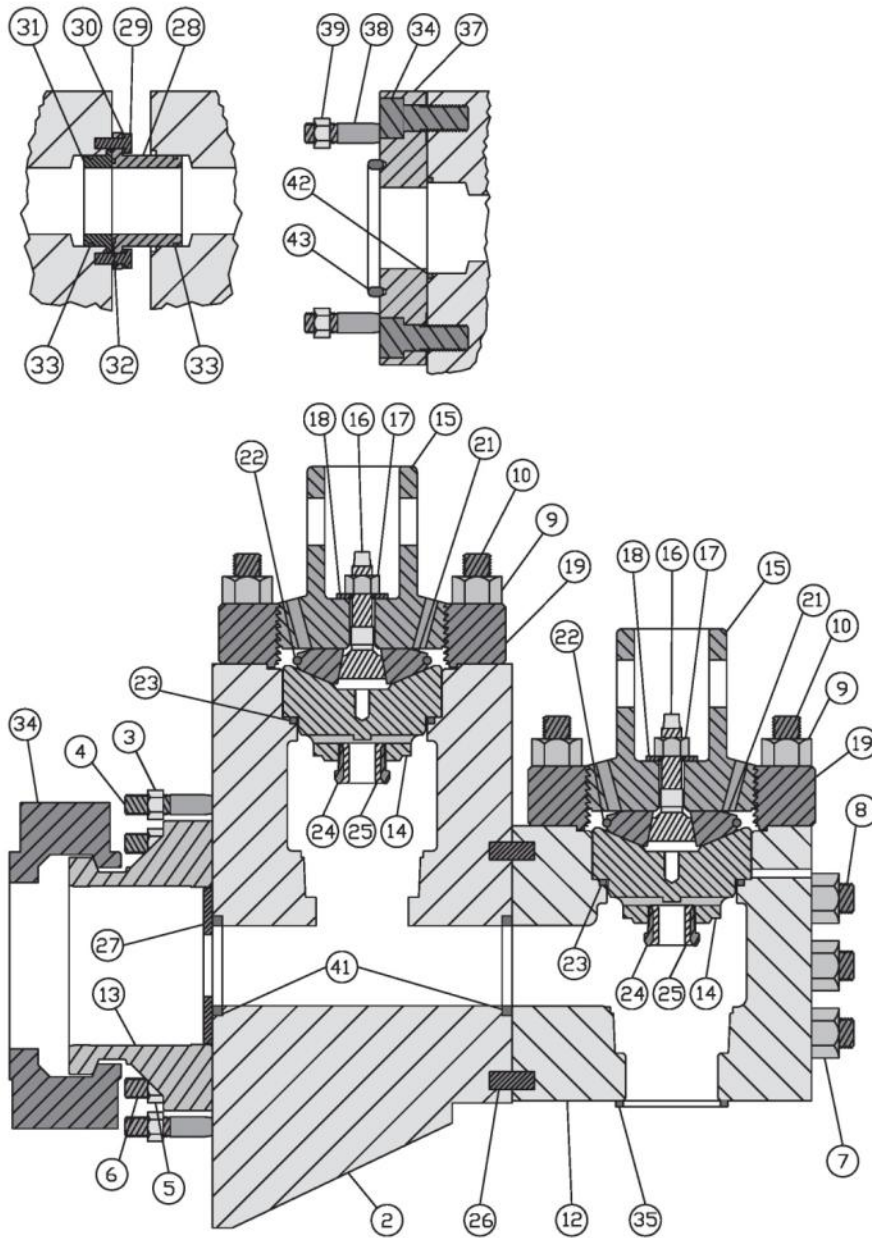
**NATIONAL 9P100**  
**FLUID END MODULE AND ACCESSORIES 液力端配件**

Item	Part No.	Description	Qty per Pump
1	LA-1293240	Discharge Module, Studded (Included Items 2 – 10) 排出阀箱带螺栓 (包括第 2 到第 10 项)	3
2	LA-1293241	Discharge Module, Only 排出阀箱	3
3	LA-6300200	Nut – Frame 六方螺母	24
4	LA-2408030	Stud – Frame 泵头与机架连接螺栓	24
5	LA-6300160	Nut – Liner Bushing 楔块调整螺母	18
6	LA-2408018	Stud – Liner Bushing 排出阀箱与泵体连接螺栓	18
7	LA-6300241	Nut – Suction to Discharge Module 六方螺母	18
8	LA-2408034	Stud – Suction to Discharge Module 螺栓	18
9	LA-6300220	Nut – Threaded Ring 六方螺母	72
10	LA-2408019	Stud – Threaded Ring 阀盖法兰用螺栓	72
11	LA-1290338	Suction Module, Studded (Included Items 9, 10, 14) 吸入阀箱带螺栓 (包括第 9,10,14 项)	3
12	LA-1290339	Suction Module, Only 吸入阀箱	3
13	LA-1291165	Bushing – Liner 缸缸套座	3
14	LA-1290174	Seal Retainer 密封支架	6
15	LA-1290307	Valve Cover 阀盖压筒	6
16	LA-1290178	Screw – Wedge Adjusting 楔块调整螺栓	6
17	LA-6300160	Nut – Wedge Adjusting 楔块调整螺母	6
18	LA-1290315	Washer – Wedge Adjusting 楔块调整垫片	6
19	LA-1290308	Threaded Ring 阀盖法兰	6
20	LA-1290376	Wedge Assembly (included items 21-22) 楔块总成 (包括第 21,22 项)	6
21	LA-1290179	Wedge, Set 楔块	6
22	LA-1290181	Spring, Wedge Retaining 楔块弹簧	6
23	LA-1540126	Gasket – Valve Cover 阀盖密封圈	6
24	LA-1292140	Holder - Valve Guide 阀导向套	6
25	LA-1292141	Insert - Valve Guide 阀导向套衬套	6
26	LA-6511416	Pin, 7/8" x 2" Dowell 吸入排出阀箱用销子	6
27	LA-1290357	<sup>1</sup> Plate - Wear 耐磨垫	3
28	LA-1290342	Connector - Discharge 排出连接法兰	2
29	LA-7000305-11	Screw, 1/2" x 1 1/2" Hex Head 六方螺丝	16
30	LA-7619050	Washer, 1/2" Lock 垫片	16
31	LA-1290343	Adapter - Discharge Connector 排出调整套	2
32	LA-2410031-348	Packing, Rectangular 方形盘根	2
33	LA-2410031-427	Packing, Rectangular 方形盘根	4
34	LA-1293166	Clamp - Liner 缸套卡箍	3
35	LA-1590051	Seal - Suction Manifold 吸入管汇密封	3
36	LA-1293243	Spacer - Discharge, Studded (Included Items 37-39) 排出管汇连接法兰总成 (包括第 37-39 项)	2
37	LA-1293244	Spacer-Discharge 排出管汇连接法兰	2
38	LA-2402560	Stud - Discharge Spacer 螺栓	16
39	LA-6300200	Nut - Discharge Spacer 六方螺母	16
40	LA-7006606	Capscrew 调整螺丝	16
41	LA-1290344	Seal - Module, Wear Plate 阀箱耐磨垫密封	6
42	LA-1290345	Seal-Discharge Spacer 排出管汇连接法兰密封圈	2
43	LA-6908033	Ring, Oval Joint 密封圈	2

<sup>1</sup>Offered in Plain Carbon or Stainless Steel 可提供碳钢或不锈钢

# 9 - P - 100

FLUID END MODULE  
AND ACCESSORIES



**NATIONAL**  
**EXPENDABLES PARTS (NATIONAL 易损件)**

6 3/4x 9 1/4

9-P-100

NATIONAL 9-P-100	PART NO.	PART NO.	PART NO.	PART NO.
Liners & Liner Packing 缸套和缸套密封圈			Gaskets 密封圈	
SIZES 类型	LINER 缸套	LINER PACKING 缸套密封圈	Valve Cover Gasket 阀盖密封圈	LA-61-0255
4"	LA-0255-40	LAG-0274	Cylinder Head Gasket 缸盖密封圈	N/A
4½"	LA-0255-44	LAG-0274		
5"	LA-0255-50	LAG-0265		
5½"	LA-0255-54	LAG-0263		
6"	LA-0255-60	LAG-0261		
6¼"	LA-255-62	LAG-0283		
6½"	LA-0255-64	LAG-0768		
6¾"	LA-0255-66	LAG-0287		

SERIES 类型	LA-4 WEB 四筋	LA-FULL OPEN 通孔	LA-G2	LA-ROUGHNECK 粗径
VALVE (Urethane Insert) 阀体 (聚氨酯)	LA-U5B-EH	LA-6FO-V1	LA-1560995	LA-RN6-V1
VALVE (Rubber Insert) 阀体 (橡胶)	LA-5B-EH	N/A	N/A	N/A
VALVE SEAT 阀座	LA-6ADD-B4	LA-6FO-S4	LA-1561450	LA-RN6-S4
VALVE SPRING 阀弹簧	LA-5710-115	LA-5710-115	LA-1560701	LA-5710-115L
VALVE INSERT (Red Thunder) 阀胶皮 (红色)	LA-UDD-6ABHT	N/A	N/A	N/A
VALVE INSERT (Urethane) 阀胶皮 (聚氨酯)	LA-UDD-6B	LA-6FO-SI	LA-1560587	LA-RN6-I
VALVE INSERT (Rubber) 阀胶皮 (橡胶)	LA-DD-6B	N/A	N/A	N/A
VALVE SEAT PULLER HEAD 阀座取出器爪头	LA-1700-6	LA-1700-6FO	LA-1700-6G2	LA-1700-6FO

Piston Size 活塞尺寸	Bonded Pistons 整体硫化活塞	Imperial Piston 活塞	Imperial Rubber Kits 胶皮	Rubber Bonded 整体橡胶	Long Life (Urethane) LL 聚氨酯
4"	LA-RT-400	LA-I40HK14/15	LA-I40HK	LA-RB-400	LA-LL-400
4½"	LA-RT-440	LA-I44HK14/15	LA-I44HK	LA-RB-440	LA-LL-440
5"	LA-RT-500	LA-I50HB14/15	LA-I50HB	LA-RB-500	LA-LL-500
5½"	LA-RT-540	LA-I54HB14/15	LA-I54HB	LA-RB-540	LA-LL-540
6"	LA-RT-600	LA-I60HB14/15	LA-I60HB	LA-RB-600	LA-LL-600
6½"	LA-RT-640	LA-I64HL14/15	LA-I64HL	LA-RB-640	LA-LL-640

\*1/4 Size are available upon request 1/4 英寸可根据用户需要提供

RODS 杆	
PISTON ROD 活塞杆	LA-0260-A
SUB ROD 连接杆	LA-0260-B
EXTENSION ROD 介杆	LA-16-0260
ROD CLAMP 活塞杆卡箍	LA-24-0260
PISTON ROD NUT 活塞杆螺母	LA-7403364